

MadeTo
Print

Intelligent Printing

Intelligent Printing and Exporting

from your preferred layout and design applications

Teams producing documents struggle with insufficient or unfriendly output procedures inside leading publishing tools. axaio MadeToPrint, the intelligent printing and exporting solution for Adobe® InDesign®, Illustrator®, InCopy® or QuarkXPress® solves current issues by extending, enhancing, and streamlining printing and output processes.

Agencies, prepress companies, printers and publishers often struggle to streamline their document output from design and page layout applications.

MadeToPrint

Intelligent Printing

In comes axaio MadeToPrint, as the intelligent printing and exporting solution that streamlines file and printed output from Adobe® InDesign®, Illustrator®, InCopy® or QuarkXPress®. axaio MadeToPrint solves these issues by extending, enhancing, checking, archiving and streamlining all output processes. It facilitates streamlined, fast and faultless production of all different file output formats through standardization and automation. MadeToPrint allows for rule based file and directory naming and makes identifying output a breeze by adding infobars with detailed metadata to each document. With the integrated layer plug-in - axaio Layers - MadeToPrint 2.4 users are able to create one single layer view for each language or regional version of a catalog for example, or to provide a technical, marketing-oriented and legal view of a design. The perfect interaction of 'axaio Layers' with the export features of MadeToPrint allows users to export the required layer views in a single document or to create a separate PDF file for each view in a single output job.

It outputs PS, EPS, PDF, JPEG, INX, IDML, Flash, ePub and SWF documents or single pages and even allows for full professionally imposed PDF output. Above all MadeToPrint checks InDesign files for missing images and fonts that had not been loaded and - if desirable - runs also a preflight check on the generated PDF files by using a custom or predefined preflight profile. All these settings are defined once in a jobset, then making them available to all users, to get consistent output from every workstation.

axaio MadeToPrint comes in three versions, Standard, Auto and Server, that offer different levels of automation. MadeToPrint Auto and Server integrate seamlessly in a variety of publishing systems as vjoon K4, WoodWing Enterprise 7, Quark Publishing System and Van Gennep PlanSystem4.

Users of the axaio MadeToPrint around the world streamline print and export operations and thus benefit from increased efficiency and reliability, reduce error levels, improve collaboration and save time and costs considerably.

Benefits

- Streamlined print and export operations
- Improved collaboration through standardization
- Reduced error levels hence increased productivity and reliability of PDF creation
- Considerable time and cost saving through automation
- Greater functionality and control over any type of output

Key features

Productivity

- Jobsets combine time consuming (and error prone) manual steps creating PDF files of varying resolutions, handling layer output and more in one mouse click
- Fast saving of output along predefined target paths
- Dynamic creation of target paths and folders
- Automatic file and directory naming
- Flexible and fast export parameter control

Quality

- Jobsets allow simultaneous control of any number of output devices
- Jobsets can be easily exported and imported for easier exchange with both users and customers
- Creates single page output from a multiple page document*
- Output of fully imposed PDFs, from simple booklets to fully-fledged brochures and books, that does not require imposition expertise*
- Individual and flexible layer processing with 'axaio Layers'
- Reliable PDF verification during PDF export
- Info bars on printouts and in PS based files*

* not in MadeToPrint Auto for Illustrator

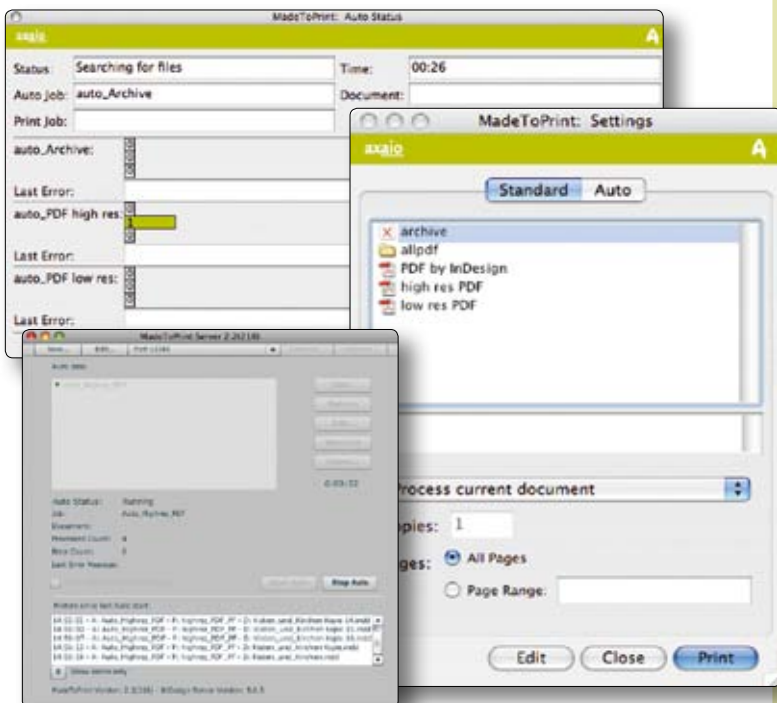
With editorial system connection

(available for MadeToPrint Auto and MadeToPrint Server)

- Keeps publication components up-to-date and output statuses under control
- Links output to condition/status of layouts, articles, images inside the editorial system
- Checks out layouts unattended
- Updates contents right before output
- Checks layout back-up into editorial system database

General

- Supports Adobe® InDesign® CS3-CS5, Adobe® Illustrator CS3/CS4, Adobe® InCopy® CS3/CS4 and QuarkXPress® 7/8
- Version 2.4 supports Adobe InDesign CS4 and CS5
- Runs under MS Windows XP Pro/Vista and Mac OS X



Publishers

Publishing environments that use Adobe® InDesign®/InCopy® or QuarkXPress® as their publishing program simply need top efficiency in terms of production procedures.

Typically, several teams simultaneously work on a large number of documents. Against the deadlines! Today they still run into output flaws, misprints, issues with layers, etc... even with leading layout and publishing tools. axaio MadeToPrint Auto and MadeToPrint Server solve current issues by automating, extending, enhancing, and streamlining printing and output processes. Predefined jobsets provide identical output from every file for increased efficiency, as well as considerable time and cost savings.

MadeToPrint seamlessly integrates in any editorial system. Specific integrations have been made with the vjoon K4, WoodWing Enterprise 7, Van Gennep PlanSystem4 and Quark Publishing System editorial systems as well as the Enfocus Switch automation platform. Any publisher looking to standardize output in order to decrease cost and errors should have a look at MadeToPrint.

Printers

For conventional or digital full service printers, the production processes leading to the final printed document need to be as efficient and reliable as possible.

Especially when handling specialized documents in multiple languages and versions. axaio MadeToPrint is the ideal gate keeper and offers streamlined and faultless production with standardized file naming, adding info bars, handling language layers and finally providing a fully imposed ready to print file.

Needless to say that this adds a tremendous efficiency increase, and considerable time and cost savings. MadeToPrint can easily be integrated in any production automation solution. A configurator for Enfocus Switch enables an easy configuration of the entire workflow.

Agencies

Inside agencies creative and production teams often struggle with insufficient or unfriendly document output procedures inside industry leading publishing tools.

In comes axaio MadeToPrint, the intelligent printing and exporting add-on to Adobe® InDesign®/InCopy®/Illustrator® or QuarkXPress®. It relieves designers for all technicalities of preparing files for print. It solves output flaws, misprints, issues with layers, etc... by extending, enhancing, checking and streamlining all output processes.

Production managers can create output jobsets once, making them available to all users, to get identical output from every workstation with one mouse click.

Packaging Service

Today, Adobe Illustrator remains the tool of choice for the creation of packaging designs.

At the same time, PDF is gaining popularity as the file format of choice for file exchange and review. With MadeToPrint for Illustrator, axaio provides a solution to automate PDF output from Illustrator with all the advantages such as cost savings and reduced errors.

For packaging design and pre-press teams, MadeToPrint is the perfect tool to automate the creation of different packaging versions, standardize file naming and increase output consistency. Once an output specification is set up in a MadeToPrint JobSet all files processed with that JobSet will consistently fit the same specification.

MadeToPrint for Illustrator also allows you to extract all kinds of versions from the same master file, different language versions, low resolution for customer approval, a technical specification version for making the die cuts and more.

Packaging designers and pre-press professionals are now able to create PDF files from Illustrator, without having to worry whether complex layer structures are correctly handled, or whether naming conventions and other production specifications are set correctly.

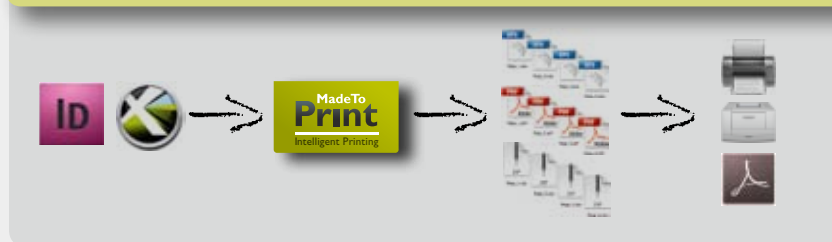


MadeToPrint

Intelligent Printing

Partners

	MadeToPrint Standard	MadeToPrint Auto	MadeToPrint Server
Xtension for QuarkXPress	✗	✗	
Plug-in for Adobe InDesign	✗	✗	
Plug-in for Adobe Illustrator	Desktop Site License	✗	
Plug-in for Adobe InCopy	✗		
Plug-in for Adobe InDesign Server			✗
True server application with remote interface			✗
Fully automated centralized output	✗	✗	✗
Automatically relink images and fonts	✗	✗	✗
PrintSets for consistent file output	✗	✗	✗
JobSets for handling multiple outputs from the same master	✗	✗	✗
Automatic and consistent file-naming	✗	✗	✗
Advanced layer handling	✗	✗	✗
Single and multiple page output	✗	✗	✗
Integration with vjoon K4	Optional	✗	✗
Integration with WoodWing Enterprise 7		✗	✗
Integration with Quark Publishing System		✗	
Integration with Van Gennepe PlanSystem4		✗	✗
Integration with Enfocus Switch		✗	✗
Integration with DFlux		✗	✗



“For well over four years, MadeToPrint Auto has played an important role in Hearst’s magazine operations, supporting nearly every stage of the magazine production process across our entire division.” (Dec 2010)

Daniel Cohen,
Senior Technology Analyst/Hearst Information Services



axaio software GmbH
 Schönhauser Allee 6/7
 D-10119 Berlin
 Phone + 49-30-443 423 90
 Fax + 49-30-441 64 02
 info@axaio.com • www.axaio.com

Complete Feature List Overview

	Adobe InDesign			Adobe InCopy	Adobe Illustrator	Quark-XPRESS
	CS3	CS4	CS5			
set flag 'active'	×	×	×	×	×	×
set flag 'locked'	×	×	×	×	×	×
set rating	×	×	×	×	×	×
Export/Print						
EPS	×	×	×			×
PDF	×	×	×	×	×	×
PostScript (File)	×	×	×			×
PostScript (Printer)	×	×	×	×		×
JPEG	×	×	×			
INX	×	×				
IDML		×	×			
SWF		×	×			
Adobe Flash		×	×			
ePub		×	×			
-no output-	×	×	×			× ^[1]
create package (doc, img, font)	×	×	×			× ^[1]
Distiller						
export to PDF via Distiller	×	×	×			×
open distiller-PDF in Acrobat						×
File naming						
destination folder with tokens	×	×	×	×	×	×
use documents folder	×	×	×	×	×	×
destination file with tokens	×	×	×	×	×	×
use documents name	×	×	×	×	×	×
index file name or overwrite output file	×	×	×	×	×	×
Layers						
all / all visible	×	×	×		×	×
all separate / all visible separate	×	×	×		×	×
layer combination	×	×	×		×	×
omit empty layers	×	×	×		×	×
export layer views		×	×			

	Adobe InDesign			Adobe InCopy	Adobe Illustrator	Quark-XPRESS
	CS3	CS4	CS5			
Output Options						
print infobar in page	×	×	×	×		×
choose a printjob name	×	×	×			×
PostScript expert to modify the PS-file	×	×	×			×
print path of images on the image	×	×	×			
print grey area instead of images	×	×	×			
flexible export parameter control		×	×			
single page output	×	×	×		[2]	×
show page box (make outline visible)	×	×	×			
Preflighting						
check for missing fonts	×	×	×		×	×
search/update missing fonts	×	×	×		×	
check for missing links	×	×	×		×	×
search/update missing/modified links	×	×	×		×	×
using live preflight (ID)		×	×			
check/optimize PDF		×	×			
Batch/Script						
preprocess scripts [document]	×	×	×			×
postprocess scripts [document]	×	×	×			×
preprocess scripts [auto job]	×	×	×			×
postprocess scripts [auto job]	×	×	×			×
batch process folder	×	×	×		×	×
predefine batch folder						×
Adapter mode for vjoon K4	×	×		×		
Hotfolder mode						
run job or set	×	×	×		×	×
save changes to modified file	×	×	×		×	
process folders	×	×	×		×	
delete input file	×	×	×		×	×
process rotationally	×	×	×		×	×
run auto on application startup	×	×	×		×	×
General						
combine jobs in sets	×	×	×	×	×	×
export job settings (all incl.)	×	×	×			
import job settings (all incl.)	×	×	×			
imposition using pdfToolbox	×	×	×			×

[2] not needed, Adobe Illustrator files are one page only